

Think Family ... think offender
supporter !

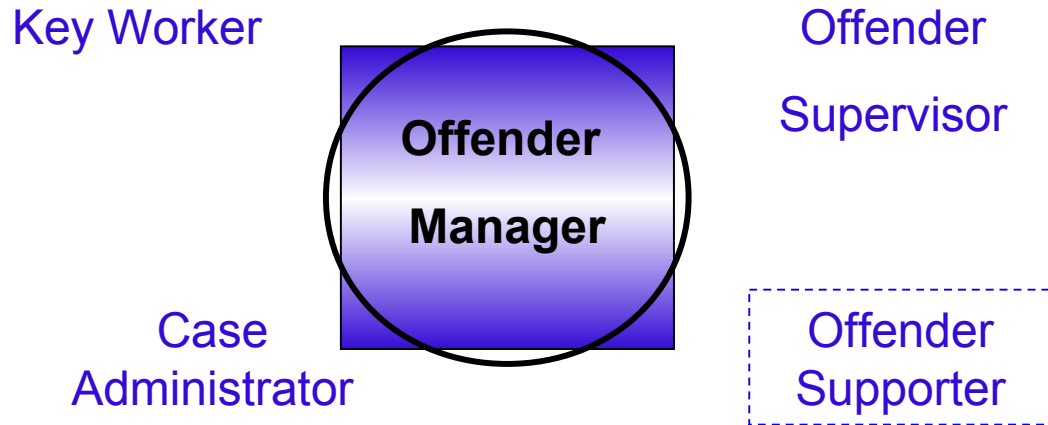
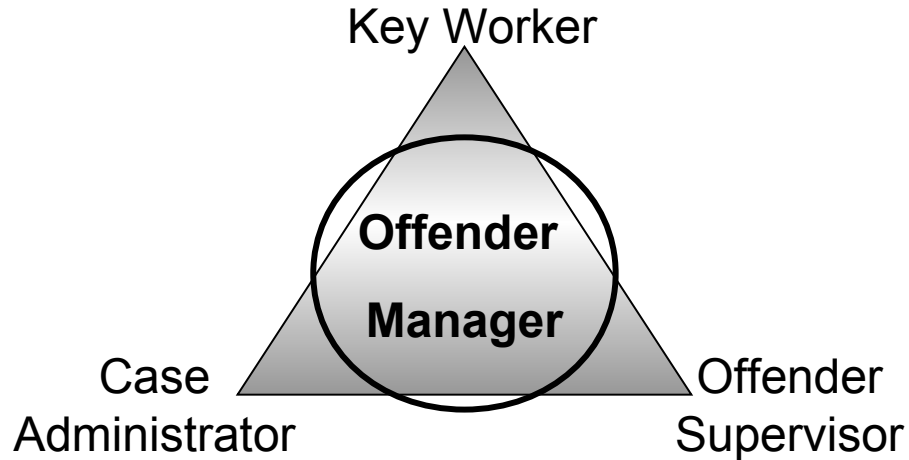
Diane Curry OBE
POPS, Director

17th June 2010

POPS HISTORY

- POPS was formed in 1988 by offenders families.
- POPS is a needs led organisation.
- POPS is a growing organisation employing approximately 80 staff and volunteers.

Who is the offender Support?



Importance of support for offenders families...

The one static thing that normally accompanies an offender from arrest to release is the family. If supported, they are there at the beginning and they will be there at the end.

Importance of support for offenders' families

It is a proven statistic that a stable and supportive family throughout the sentence is a key factor in preventing re-offending on release.

- Martin Narey -

We can offer families Support

- Acknowledge their situation
- Reduce levels of anxiety providing appropriate information at appropriate timelines.
- Provide an opportunity to share their feelings recognise their support needs.
- Refer and support them to access community based services i.e. health, children's services.

Support that families can offer us

- Alert agencies to a change in their loved ones general well being.
- Information about their loved ones behaviour and/ or their requirements.
- Support and motivation for their loved ones which may assist them to comply with treatment, regimes and/ or programmes.

What can you do?..

- Think Family .. Think offender supporter
- Let families be part of the process
- Consider families as a positive factor for change
- Develop a line of communication
- Inform yourself of support services and refer appropriately
- Set up protocols for the appropriate sharing of information and joint working

Why should you bother

- This is a true integrated offender management model.
- Possible cost savings-families are a fantastic resource
- Improved public perception of your service/Reduce the risk of non compliance
- Improve the chance of engaging and maintain an offender in treatment and/ or programmes.
- Encouraging family involvement in the delivery and provision of services to offenders is a positive influence which can begin to break intergenerational cycles of criminogenic behaviour and/ or levels of mental health concerns .

How will it look?

- **Arrest** – (Police can liaise with families to provide information that may assist possible diversion from custody)
- **Court** – Families being supported to contribute to pre- sentence reports, ACCT documents, treatment options
- **Custody** – Families being supported to maintain relationships, understand how to feed into progression plans and for in reach teams to formulate a protocol for liaising with families
- **Community** – families being seen as a conduit for additional support to aid compliance, motivation and engagement. – being kept in the loop

**Police staff -
Medical Advisor -
CPS - 3rd Sector**

**NOMS –
Legal Team – Clerk
– Magistrate –
3rd Sector**

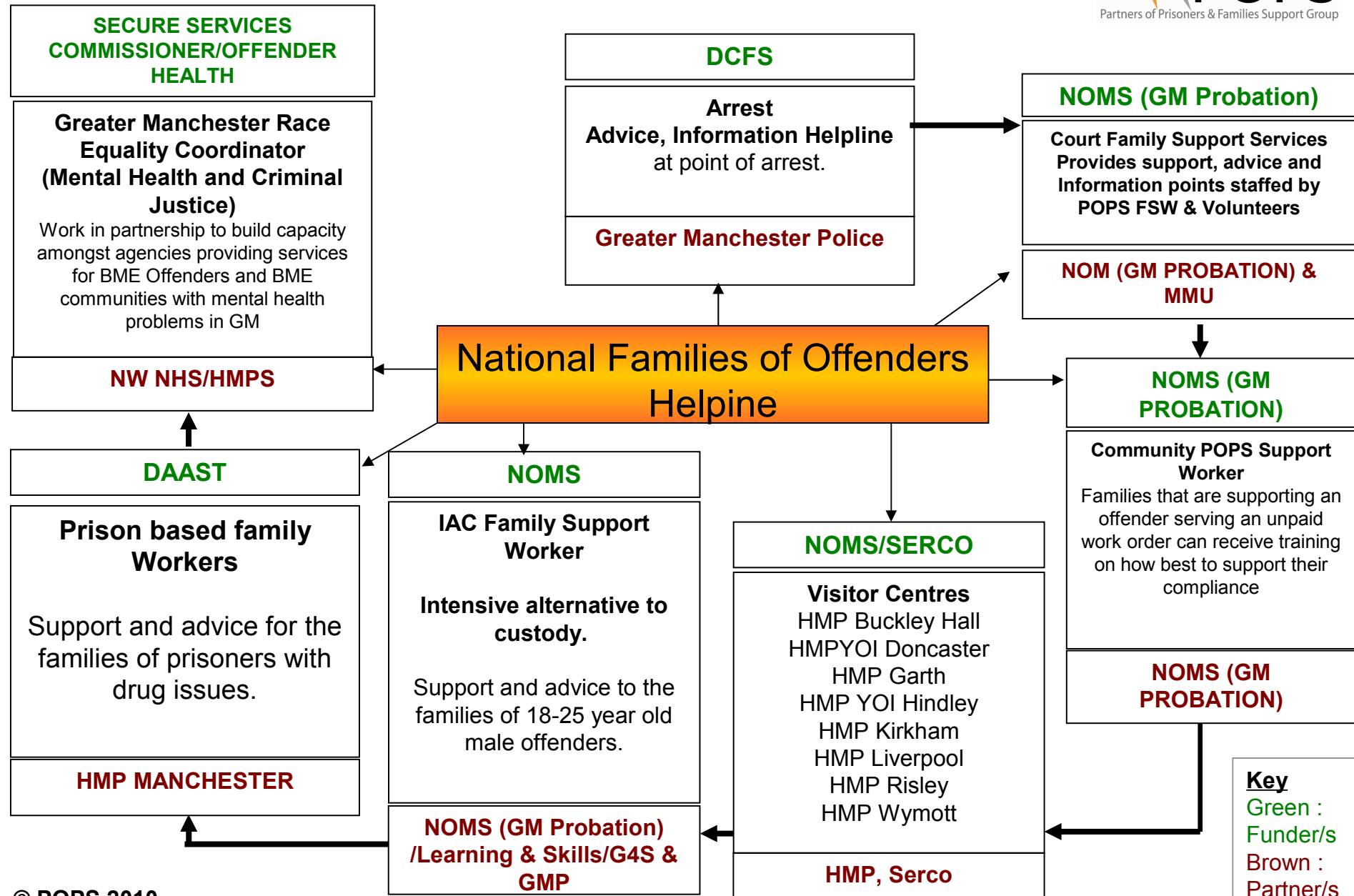
**NOMS – PCT –
Mental Health teams
– 3rd Sector**

**NOMS – PCT –
Mental Health teams
– 3rd Sector**

How will it look? continued

- **This model requires :**
 - Acknowledgement of the role
 - Systems/ procedures to assist (data gathering, inputting)
 - Information sharing protocol.
 - Knowledge of support services for families.

POPS Continuum of Care Model



Thank you for your attention

Diane Curry OBE,
Director, POPS

Table Top Discussion

- Each Table has
 - 2 questions
 - Flipchart paper/pen
 - 1 Facilitator (CDW)
- Take approximately 20 minutes to discuss the question and write your key points on the flipchart.
- At end of session Farida will host each tables response (which will be limited to approx 1 minute)